

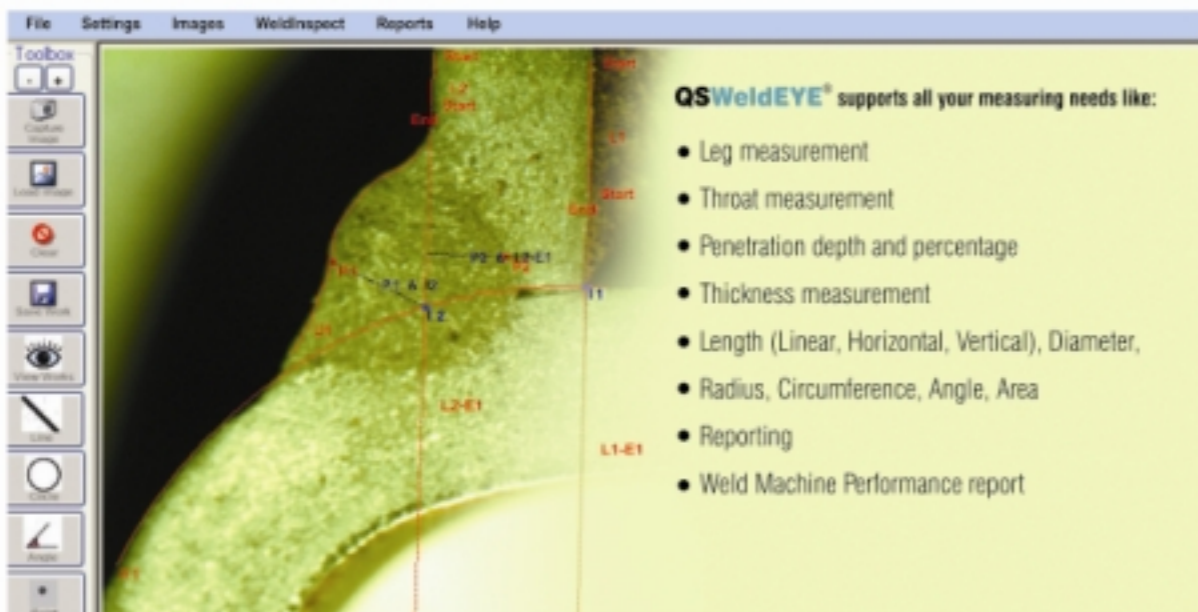
Advanced Welding Penetration Analysis System



# QSWeldEYE®

- Can draw and measure Line, Circle, Angle, Arc, Curve
- High Quality Microscope & Camera
- Image capture directly from application
- High Accuracy & Repeatability
- Menu driven measuring - ensures accuracy & repeatability
- Reporting - PDF, Excel & Open Office
- User friendly interface & great features
- Supports Part Programming

QSWeldEYE® is a Windows based imaging application that delivers the state of the art imaging solutions for checking the quality of welding. QSWeldEYE® is a powerful, easy to use tool that enhances the ability to quickly and efficiently handle all critical Welding Measurements and report generation. This software is designed with the welding cross-section measurement needs in mind.



Advanced Welding Penetration Analysis System

# QSWeldEYE®

- High-quality microscope and camera
- Image Capture through the system with the click of a button
- Easy-to-use and user friendly interface for analysis
- High accuracy in measurements
- Menu driven measuring – high accuracy and repeatability
- Accurate calibration with certified master scale
- Can set expected value and tolerances (+/-) for each measure
- Automatic Pass/Fail status identification based on expected value and tolerances set
- Supports Part programming, where you can save your drawings as templates



Value	Exptd	Tol(+)	Tol(-)
14.259	14	1	1
25.511	25	1	1
55.894	50	10	10
8.31899999...	8	1	1
28.973	30	1	1

- Reporting of measurements in PDF, MS Excel or Open Office
- Summary reporting at component level by stitching individual reports for each weld spots
- Performance reports on weld machines with Pass/Fail statistics
- Templates for each type of work/job and can set Expected values and tolerances



## QS Metrology Private Ltd

# 806, TC Jaina Tower-1, District Centre, Janak Puri, New Delhi, India -110 058  
Telephone : +91-11-25594270 +91-11-25573986 Fax : +91-11-25614270

e-mail: [info@qsmetrology.com](mailto:info@qsmetrology.com)  
web: [www.qsmetrology.com](http://www.qsmetrology.com)  
[www.qsmetlab.com](http://www.qsmetlab.com)